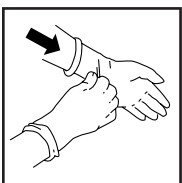
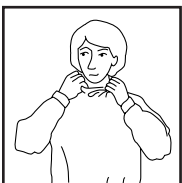


Bloodborne Diseases:

Reducing Your Risks at Work and Standard Precautions Review

Charles A. Illian, RN, BSN, CIC



Bloodborne Diseases:

Reducing Your Risks at Work and Standard Precautions Review

Contributor

Charles A. Illian, R.N., B.S.N.
Infection Control Practitioner & Consultant
Staff Development Educator
Orlando, Florida

The publisher gratefully acknowledges the contributions of the following individuals who reviewed this material:

Margaret J. Jones, R.N.C.
Assistant Director of Nursing
The Forum - Pueblo Norte
Scottsdale, Arizona

Jennifer C. Gilliland, R.N.
Home Care Director and Consultation
Florence, Kentucky

Janet Sonnenberg, R.N., M.S., L.N.H.A.
Long Term Care Surveyor
The Joint Commission on Accreditation of Healthcare Organizations
Oakbrook Terrace, Illinois

Shirley L. Meyer Speth, R.N., B.S.N.

Paula S. Elberhousi, R.N., B.S.N, M.S.
The Creative Pen
New York, New York

Hartman Publishing, Inc.

Albuquerque, NM

NOTICE TO THE READER

Though the guidelines contained in this text are based on consultations with health care professionals, they should not be considered absolute recommendations. The instructor and readers should follow local, state and federal guidelines concerning occupational safety guidelines. These guidelines change and it is the reader's responsibility to be aware of these changes and of the policies and procedures of her or his health care facility/agency.

The publisher, author, editors and reviewers cannot accept any responsibility for errors or omissions or for any consequences from application of the information in this book and make no warranty, express or implied, with respect to the contents of the book.

Publisher does not warrant or guarantee any of the products described herein or perform any analysis in connection with any of the product information contained herein.

CREDITS

Contributor: Charles Illian
Development Editor: Jennifer Plane Hartman
Design and composition: Surprise Design

THANKS

The publisher wishes to thank—

- Tech Pool Studios Corp., Cleveland, Ohio (216-382-1234) for the use of medical illustrations from their (wonderful) LifeART Super Anatomy 1 and Health Care collections.

ISBN 1-888343-01-X

© 1997 Hartman Publishing, Inc.
All rights reserved. Limited permission to reproduce sections of this text is granted as follows: **Copies of the labeled handouts may be made for employees or students at ONE LOCATION of a multi-site employer or school if the employer or school purchased an original copy of this text directly from the publisher.** No other part of this book may be reproduced, in any form or by any means, without permission in writing from the publisher.

Table of Contents

FYI 5

Learning Objectives 7

Lesson Plan 9-22

Introduction and Assessment ■ Describe OSHA's bloodborne pathogens standard ■ Describe the importance of the exposure control plan ■ Define the term "standard precautions" ■ Define the term "engineering controls," listing examples used at your facility ■ Define the term "work practice controls," listing examples used at your facility ■ Demonstrate the proper method of handwashing and list when handwashing is required ■ Demonstrate the proper use of personal protective equipment (PPE) and list when it is required by your facility ■ Define the term "housekeeping practices" ■ Briefly describe the importance of a hepatitis B immunization for the health care worker ■ Identify two types of barrier resuscitative devices and demonstrate the proper use of one ■ Conclusion and Assessment

References 23

Transparencies 25-50

OSHA Bloodborne Pathogens Standard ■ Who Is Covered? ■ Key Terms ■ The Exposure Control Plan ■ Six Ways to Reduce Your Risk ■ Standard Precautions ■ Which Body Fluids Does SP Include? ■ What Are Engineering Controls? ■ Work Practice Controls ■ When to Wash Hands ■ More Handwashing ■ Handwashing Procedure ■ If Handwashing Facilities Are Not Available ... ■ Other Work Practice Controls ■ Personal Protective Equipment (PPE) ■ Rules for PPE Use ■ Guidelines for PPE Use ■ What is the most common PPE used? ■ Gloving Procedure ■ Putting on Isolation Gown, Face Mask, and Eye Shield ■ Removing an Isolation Gown, Face Mask, and Eye Shield ■ Exception to PPE Use ■ Housekeeping Practices ■ Hepatitis B Immunization ■ Protection During Mouth-to-Mouth

Handouts 51-61

Assessment A ■ Assessment B ■ Answer Keys for Assessments A and B ■ Note-taking Worksheet ■ Key Terms ■ Understanding Hepatitis ■ HIV and AIDS ■ Competency Check-off Sheet: Handwashing ■ Competency Check-off Sheet: PPE Procedure

In-Service Evaluation Form 62

Record Keeping Form 63

Certificate of Completion 64

For More Information (see enclosure)

This in-service lesson plan is designed to offer flexibility to the instructor — both in what specific policies and procedures are included and in how the material is presented. The lesson plan is based on the OSHA standard for teaching this material and provides a framework on which to structure your in-service. You will want to integrate specific policies and procedures for infection and exposure control at your facility.

The lesson plan is organized by learning objectives. Each objective is followed by several learning activities. Along with the lesson plan, we provide teaching tools, including transparency masters, handouts, and assessments. These teaching tools are referenced in the lesson plan. You may choose to use none or all of these tools in your presentation.

As you integrate the specific policies and procedures of your facility into this in-service plan, please consider the following suggestions:

1. Demonstrate the proper procedures for handwashing and the use of personal protective equipment (PPE). One-on-one return demonstration is the best method of assessing mastery of these procedures. Discuss all instances in which PPE's are to be used according to your facility's guidelines.
2. Use the OSHA standard language and procedures for teaching about

bloodborne pathogens. We use this language in the lesson plan.

3. Include the lesson on standard precautions that we have provided (Learning Objective 3). It is also required to be taught annually, and it is more efficient to teach bloodborne pathogens and standard precautions together.

We hope this in-service plan helps you and your participants.

Happy teaching!

Bloodborne Diseases

Learning Objectives

At the end of this presentation, the participant will be able to accomplish the following:

1. Describe OSHA's bloodborne pathogens standard.
2. Describe the importance of the exposure control plan.
3. Define the term "standard precautions."
4. Define the term "engineering controls," listing examples used at your facility.
5. Define the term "work practice controls," listing examples used at your facility.
6. Demonstrate the proper method of handwashing and list when handwashing is required.
7. Demonstrate the proper use of personal protective equipment and list when it is required by your facility.
8. Define the term "housekeeping practices."
9. Briefly describe the importance of a hepatitis B immunization for the health care worker.
10. Identify two types of barrier resuscitative devices and demonstrate the proper use of one.

Introduction and Assessment

Estimated Time:	15–20 minutes
Tools:	Transparency Intro–1 – Program Title Handout Intro–1 – Assessment A Handout Intro–2 – Assessment B Handout Intro–3 – Assessment Answer Keys Handout Intro–4 – Note-taking Worksheet Handout Intro–5 – Key Terms

Display Transparency Intro-1 Program Title	Two different assessments are provided for your use. One has true/false questions and one has multiple choice. You may choose to use one as a pre-test and one as a post-test, or you may want to use the true/false assessment as a discussion tool to introduce the in-service and use the multiple choice assessment as a more formal post-test. If you are using one assessment as a discussion tool in your introduction, consider having the participants complete the assessment in small groups, then ask the members of each group how they think they did. Ask which questions they feel certain they answered correctly. This will make a good lead-in to the learning objectives.
Distribute the assessment	
Distribute Handout Intro-4 Note-taking Worksheet	Tell the participants to take notes during lecture and discussion.
Distribute Handout Intro-5 Key Terms	Participants may wish to refer to these definitions during the in-service.

Describe OSHA's bloodborne pathogens standard

Estimated time:	5-10 minutes
Tools:	Transparency 1-1 – OSHA Bloodborne Pathogens Standard Transparency 1-2 – Who is Covered? Transparency 1-3 – Key Terms Handout 1-1 – Understanding Hepatitis Handout 1-2 – HIV and AIDS

Learning Activity: Lecture & Discussion

Introduce the topic by telling participants that although their job is helping others, they must always remember to think of their own safety at work. While performing their job duties they may come into contact with potentially infectious substances and materials. The Occupational Safety and Health Administration (OSHA) has published a series of guidelines to protect health care workers from such exposure.

**Display
Transparency 1-1
OSHA Bloodborne
Pathogens Standard**

Explain that the OSHA standard details ways to substantially reduce the risk of contracting a bloodborne disease in the health care setting.

**Display
Transparency 1-2
Who is Covered?**

Review the definition, citing examples of the tasks that cause the participants to qualify as “covered” by the standard. Definition: Any employee for whom it may be reasonably anticipated that exposure to a bloodborne pathogen could occur as a result of performing his or her job duties.

**Display
Transparency 1-3
Key Terms**

Review each of the definitions. If you have time you may want to discuss each bloodborne disease in depth. Included in the handout section of this in-service are descriptions of the major bloodborne diseases, including hepatitis C, hepatitis B, and HIV/AIDS.

Remind participants that standard precautions are an important part of the OSHA standard and are covered extensively in this in-service.